

Applications

All persons 18 years or older must fill out an application. This document must be filled out completely and truthfully and submitted with a non-refundable fee of \$35.

We do not accept Comprehensive Reusable Tenant Screening Reports (CRTSR).

Deposits and Fees

\$1,000 Deposits & Fees:

- \$750 is a refundable deposit*
- \$250 is a non-refundable administrative fee
- * Should the resident vacate the rental unit before 12 full months, a non-refundable administrative fee of \$750 will be assessed.
- ** Additional deposit may be required

Apartments are held with completed applications and a \$1,000 Holding Fee which will be applied toward your total move in costs on approval. If denied residency, the Holding Fee will be returned to you with a letter providing how to contact the screening company. If you do not rent the apartment after approval, you will forfeit the Holding Fee.

Pet Policy

Only pet cats and fish tanks 10 gallons or less are accepted. Limit 2 cats.

Cat Deposit & Fee: \$750 Total

\$500 Deposit, \$250 Non-Refundable Fee. This must be paid in full and individual animal approved before cat enters the unit.

All cats must be over 1 year old and spayed/neutered, litter box trained, and indoor only.



We are an Equal Opportunity Housing Provider. We comply with the Federal Fair Housing Act. We do not discriminate against any person because of race, color, religion, sex, handicap (disability), familial status or national origin. We comply with all State and Local Fair Housing Laws.

Canterbury Court Apartments

3790 Canterbury Lane
Bellingham, WA 98225

360-734-7733

www.canterburycourt.us

canterburycourt3790@outlook.com

Fax: 360-734-0271

Canterbury Court Apartments

1 & 2 Bedroom Units



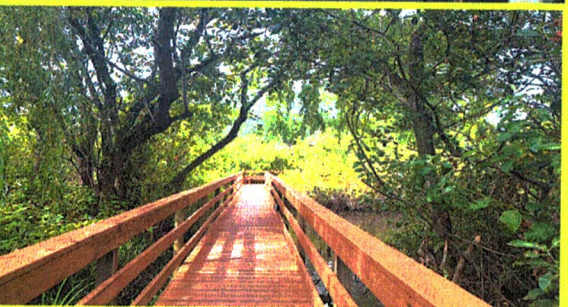


A Style Rent \$ _____
2 Bdr/1 Bath: 980 Sq.Ft.

B Style Rent \$ _____
2 Bdr/1.5 Bath: 980 Sq.Ft.

C Style Rent \$ _____
1 Bdr/1 Bath: 736 Sq.Ft.

D Style Rent \$ _____
2 Bdr/1 Bath: 926 Sq.Ft.



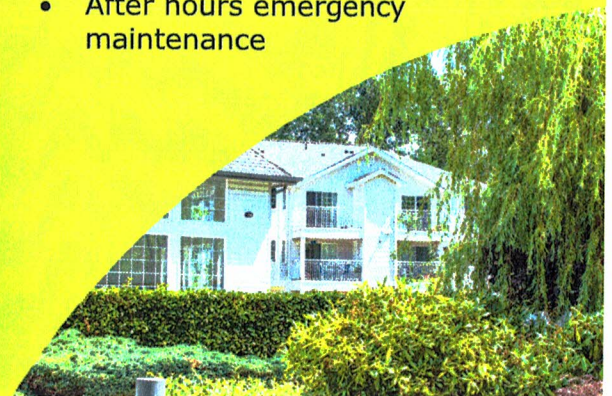
Live in a beautiful natural setting with convenience and amenities

Community Features:

- Indoor pool
- Spa & Sauna
- Community room with kitchen
- Large screen TV
- Pool table
- Workout room
- Assigned covered parking
- Close to shopping and I-5
- Lush pond with boardwalk
- Mature landscaping
- No Smoking policy
- Sun deck with loungers and gas grill

Rental Features:

- Full size stove and oven
- Refrigerator and dishwasher
- Washer and dryer
- Balcony, deck or patio
- Forced air heat
- Cable and internet ready
- On-site management
- After hours emergency maintenance



Welcome to the Neighborhood

The Sunset Pond Apartment community borders on a wetlands preserve and Sunset Pond. Many apartments have attractive views overlooking the pond and grounds. All apartments have a washer & dryer, walk-in closet and covered parking.

Sunset Pond has a luxurious clubhouse with an indoor pool, sauna, spa, and exercise room. The lounge and party room have a welcoming kitchen, a big screen TV and a pool table.

There are a number of stores and restaurants within easy walking distance. Public transportation and major streets and highways are nearby.



Sunset Pond has convenient access to all parts of Bellingham, yet retains the value of peaceful living while being close to shops, schools and transport.



We are an Equal Opportunity Housing Provider. We comply with the Federal Fair Housing Act. We do not discriminate against any person because of race, color, religion, sex, handicap (disability), familial status or national origin. We comply with all State and Local Fair Housing Laws.

Contact us at

Phone 360-734-7722

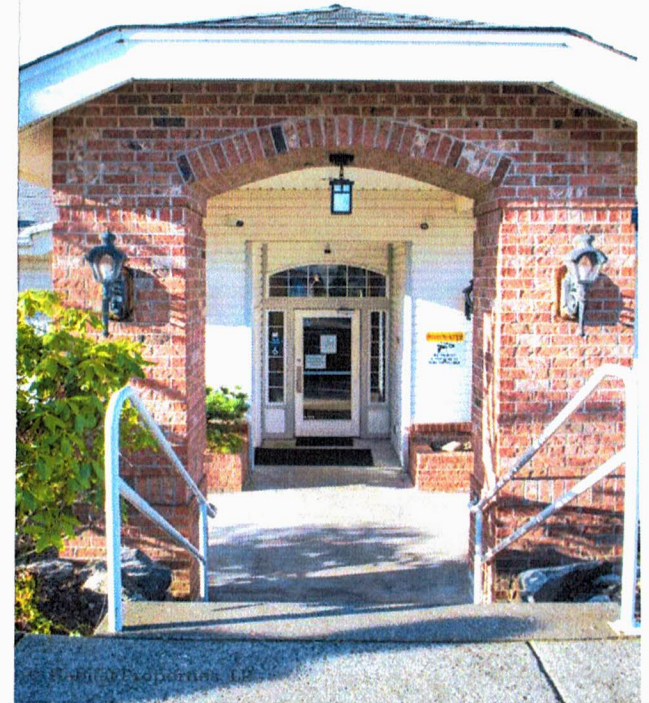
Fax 360-676-0101

www.sunsetpond.us

sunsetpondoffice@gmail.com

Sunset Pond Apartments

1205 Woodstock Way
Bellingham, WA 98226



**Sunset
Pond
Apartments**

1,2 & 3 Bedroom Units

Live in a beautiful natural setting with convenience and amenities

Applications

All persons 18 years or older must fill out an application. This document must be filled out completely and truthfully and submitted with a non-refundable fee of \$35.

We do not accept Comprehensive Reusable Tenant Screening Reports (CRTSR).

Deposits and Fees

\$1,000 Deposits & Fees:

➤ \$750 is a refundable deposit*

➤ \$250 is a non-refundable administrative fee

* Should the residents vacate the rental unit before 12 full months, a non-refundable administrative fee of \$750 will be assessed.

** Additional deposit may be required.

Apartments are held with completed applications and a \$1,000 Holding Fee which will be applied toward your total move in costs on approval. If denied residency, the Holding Fee will be returned to you with a letter providing how to contact the screening company. If you do not rent the apartment after approval, you will forfeit the Holding Fee.

Pet Policy

Only pet cats and fish tanks 10 gallons or less are accepted. Limit 2 cats.

Cat Deposit & Fee: \$750 Total

\$500 Deposit, \$250 Non-Refundable Fee. This must be paid in full and individual animal approved before cat enters the unit.

All cats must be over 1 year old and spayed/neutered, litter box trained, and indoor only.

Apartment Styles

A Style

2 Bedroom/ 1.75 Bath
919 Square Ft.

\$ _____

B Style

1 Bedroom/ 1 Bath
696 Square Ft.

\$ _____

C Style

3 Bedroom/ 1.75 Bath
1344 Square Ft.

\$ _____

D Style

1 Bedroom/ 1 Bath
665 Square Ft.

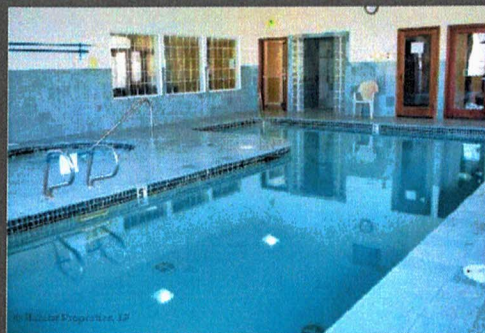
\$ _____


Community Features:

- Indoor Pool
- Spa & Sauna
- Community room with kitchen
- Barbeque area
- Large screen TV
- Pool Table
- Workout room
- Assigned covered parking
- Mature landscaping
- Close to shopping and I-5
- No Smoking policy

Rental Features:

- Full size stove and oven
- Refrigerator and dishwasher
- Washer and dryer
- Walk-in closet
- Balcony, deck or patio
- Cable and internet ready
- Pond and wetlands views
- On-site management
- After hours emergency maintenance

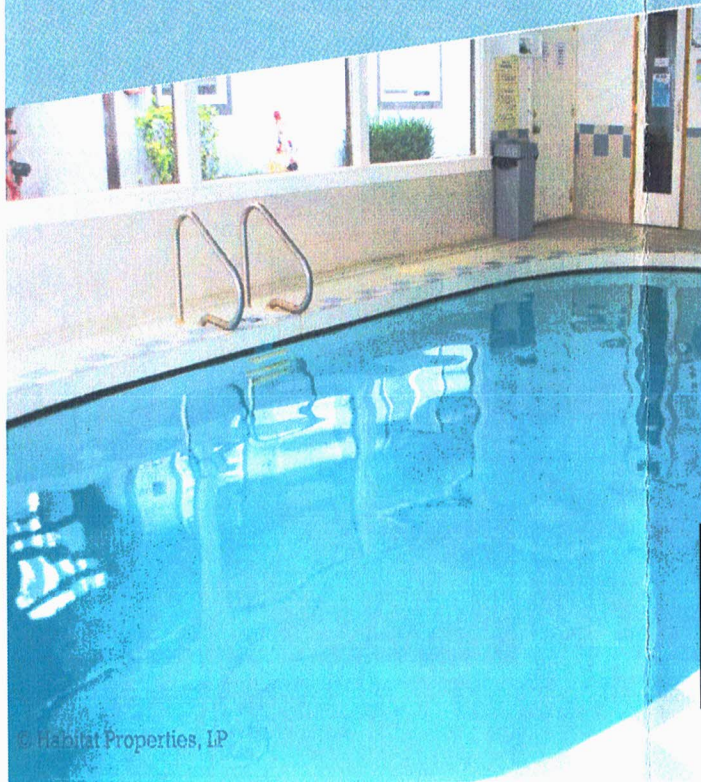
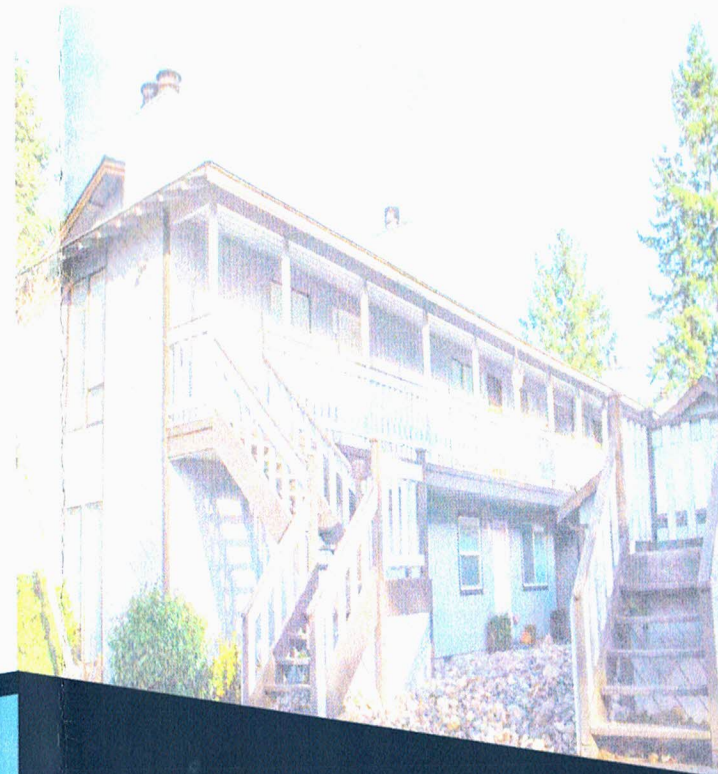




**Enjoy our newly remodeled
apartments close to shopping
and town. All units have
electric fireplaces to keep you
cozy in the winter and select
units have enclosed sunrooms
that allows you to enjoy
natural light regardless of the
weather. Visit the indoor
heated pool or sauna available
year-round to our residents.**



We are an Equal Opportunity Housing Provider. We comply with the Federal Fair Housing Act. We do not discriminate against any person because of race, color, religion, sex, handicap (disability), familial status or national origin. We comply with all State and Local Fair Housing Laws.



3528 Northwest Avenue

Bellingham, WA 98225

habitatnw@qwestoffice.net

Habitatnorthwest.us

Habitat NW Apartments

360-734-5167



Habitat Northwest Apartments

1 & 2 Bedroom Units

Applications:

All persons 18 years or older must fill out an application. This document must be filled out completely and truthfully and submitted with a non-refundable fee of \$35.

We do not accept Comprehensive Reusable Tenant Screening Reports (CRTSR).

Deposits and Fees:

\$1,000 Deposits & Fees:

- \$750 is a refundable deposit*
- \$250 is a non-refundable administrative fee
- * Should the resident vacate the rental unit before 12 full months, a non-refundable administrative fee of \$750 will be assessed.
- ** Additional deposit may be required

Apartments are held with completed applications and a \$1,000 Holding Fee which will be applied toward your total move in costs on approval. If denied residency, the Holding Fee will be returned to you with a letter providing how to contact the screening company. If you do not rent the apartment after approval, you will forfeit the Holding Fee.

Pet Policy:

Only pet cats and fish tanks 10 gallons or less are accepted. Limit 2 cats per apartment.

Cat Deposit & Fee: \$750 Total

\$500 Deposit, \$250 Non-Refundable Fee. This must be paid in full and individual animal approved before cat enters the unit.

All cats must be over 1 year old and spayed/neutered, litter box trained, and indoor only.

Apartment Styles

1 Bedroom/1 Bathroom

624 Square Ft
W/D, Electric Fireplace

\$ _____

1 Bedroom/1 Bathroom

656 Square Ft.
W/D, Sunroom, Electric Fireplace

\$ _____

2 Bedroom/1 Bathroom

672 Square Ft.
W/D, Electric Fireplace

\$ _____

2 Bedroom/1 Bathroom

786 Square Ft.
W/D, Sunroom, Electric Fireplace

\$ _____

2 Bedroom/1 Bathroom Split Level

1016 Square Ft.
W/D, Sunroom, Electric Fireplace

\$ _____

Community Features:

- Indoor heated pool
- Sauna
- No Smoking policy
- Assigned parking
- On-site management

Rental Features:

- Full size stove and oven
- Refrigerator and dishwasher
- Washer and dryer
- Electric fireplace
- Ceiling fan (most units)
- Cable and internet ready
- After hours emergency maintenance

